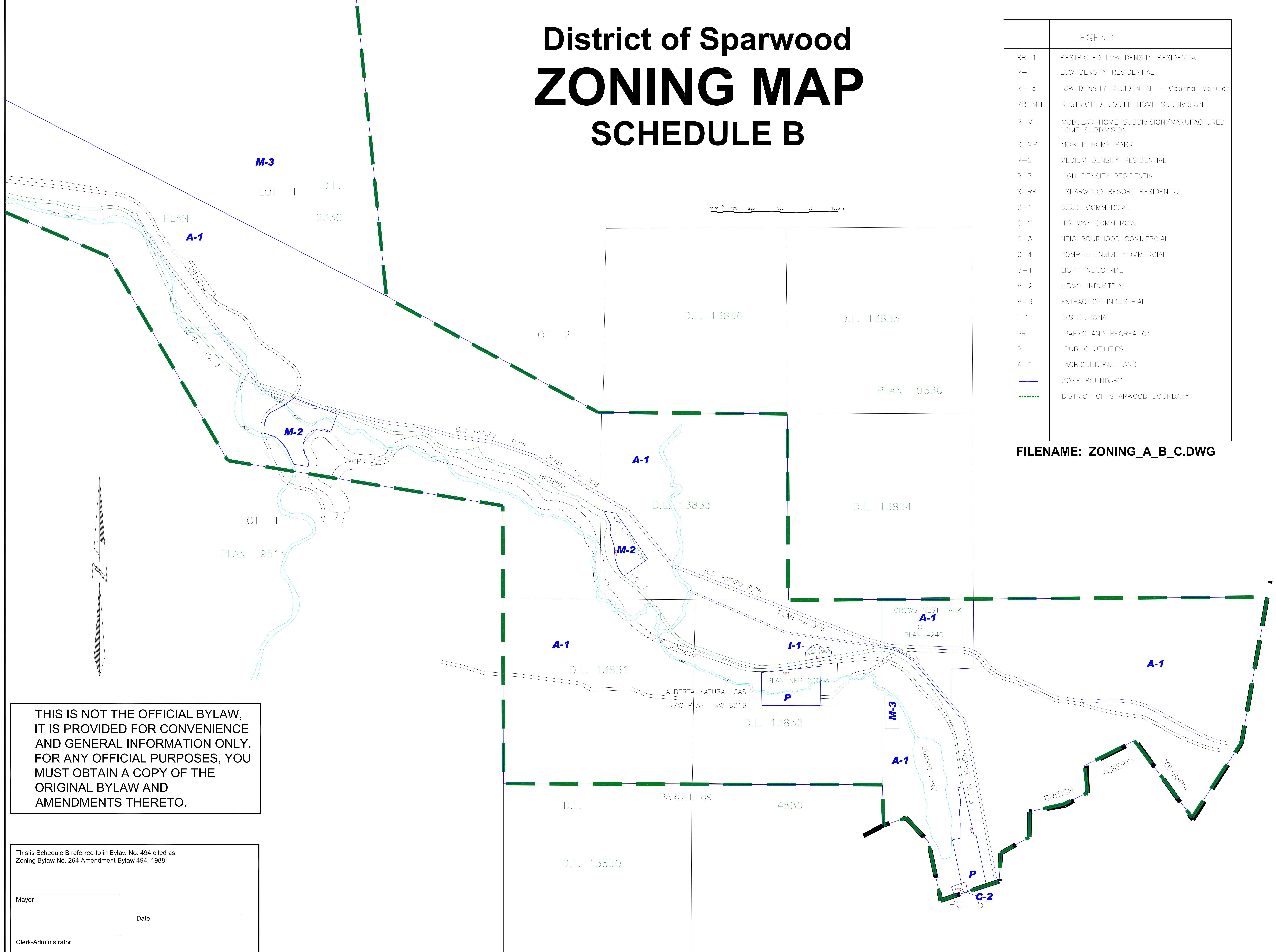


District of Sparwood ZONING MAP SCHEDULE B

LEGEND	
RR-1	RESTRICTED LOW DENSITY RESIDENTIAL
R-1	LOW DENSITY RESIDENTIAL
R-1a	LOW DENSITY RESIDENTIAL - Optional Modular
RR-MH	RESTRICTED MOBILE HOME SUBDIVISION
R-MH	MODULAR HOME SUBDIVISION/MANUFACTURED HOME SUBDIVISION
R-MP	MOBILE HOME PARK
R-2	MEDIUM DENSITY RESIDENTIAL
R-3	HIGH DENSITY RESIDENTIAL
S-RR	SPARWOOD RESORT RESIDENTIAL
C-1	C.B.D. COMMERCIAL
C-2	HIGHWAY COMMERCIAL
C-3	NEIGHBOURHOOD COMMERCIAL
C-4	COMPREHENSIVE COMMERCIAL
M-1	LIGHT INDUSTRIAL
M-2	HEAVY INDUSTRIAL
M-3	EXTRACTION INDUSTRIAL
I-1	INSTITUTIONAL
PR	PARKS AND RECREATION
P	PUBLIC UTILITIES
A-1	AGRICULTURAL LAND
	ZONE BOUNDARY
	DISTRICT OF SPARWOOD BOUNDARY

FILENAME: ZONING_A_B_C.DWG



THIS IS NOT THE OFFICIAL BYLAW,
IT IS PROVIDED FOR CONVENIENCE
AND GENERAL INFORMATION ONLY.
FOR ANY OFFICIAL PURPOSES, YOU
MUST OBTAIN A COPY OF THE
ORIGINAL BYLAW AND
AMENDMENTS THERETO.

This is Schedule B referred to in Bylaw No. 494 cited as
Zoning Bylaw No. 264 Amendment Bylaw 494, 1988

Mayor _____

Date _____

Clerk-Administrator _____